

Care Management PCMH Committee

Person-Centered Medical Home
Program Update
June 14, 2023



PCMH Program Status

As of May 31, 2023

PCMH Program Participants		Sites		Providers	
4/30/23	5/31/23	4/30/23	5/31/23	4/30/23	5/31/23
126	125	565	565	2,424	2,416
92 PCMH Approved Practices NCQA Sustained Recognition		24 Glide Path Practices Working Towards NCQA Recognition		0 Glide Path Renewal Practices Working towards NCQA Renewal Recognition	
				16 PCMH Accredited Practices Includes FQHCs	

Note: 7 Practices have sites in both PCMH & Glide Path Programs

PCMH Approved Practices

PCMH Approved Practices

4/30/23

93

5/31/23

92

New Approved Practices: 0

Completed Glide Path: 0

Termed Practices: 1

PCMH Approved Sites

4/30/23

384

5/31/23

383

New Approved Sites: 0

Completed Glide Path: 0

Sites Termed: 1

PCMH Approved Providers

4/30/23

1,778

5/31/23

1,766

Completed Glide Path: 0

Providers Added: 25

Providers Termed: 37

PCMH Adult & Pediatric Practices

92 PCMH Approved
Practices

383
PCMH Approved Sites

35 Internal
Medicine
PCMH
Practices
with **180** Sites

23 Family
Medicine
PCMH
Practices
with **105** Sites

53 Pediatric
PCMH
Practices
with **97** Sites

1 Geriatric
PCMH
Practice
with **1** Site

This data reflects current information through May 31, 2023

*Note: 8 Practices have sites in 3 of the 4 categories & 4 Practices have sites in 2 of the 4 categories.
Sites are counted once.*

PCMH Glide Path Practices

Glide Path Practices

4/30/23

23

5/31/23

24

New Practices: 1

Completed Glide Path: 0

Practices Termed: 0

0

Glide Path Renewal Practice

Completed Glide Path Renewal: 0

Glide Path Sites

4/30/23

38

5/31/23

39

New Practice Sites: 1

Completed Glide Path: 0

Sites Termed: 0

Glide Path Providers

4/30/23

92

5/31/23

97

New Providers: 5

Completed Glide Path: 0

Providers Added: 0

Providers Termed: 0

0 Sites
0 Providers

Sites Completed Glide Path Renewal: 0

Providers Completed Glide Path Renewal: 0

PCMH Accredited Program Participants

Federally Qualified Health Centers (FQHCs) and FQHC look-alikes are program participants*

PCMH Accredited Participants

4/30/23

16

5/31/23

16

No Change

PCMH Accredited Sites

4/30/23

143

5/31/23

143

Sites Added: 0

Sites Terminated: 0

PCMH Accredited Providers

4/30/23

554

5/31/23

553

Providers Added: 2

Providers Terminated: 3

*Federally Qualified Health Centers (FQHCs) and FQHC look-alikes are PCMH program participants if they are pursuing and/or have obtained the Joint Commission Ambulatory Care accreditation with Primary Care Medical Home certification as well as NCQA recognition.

PCMH CY2023 Program Recruitment

Recruitment as of May 31, 2023

- **14 Practice Sites**
 - 4 New Practice Sites
 - 10 New Sites from Current PCMH Practices
- **25 Providers**
 - 7 From New Practice Sites
 - 18 From New Sites from Current PCMH Practices

Practice Recruitment Opportunities

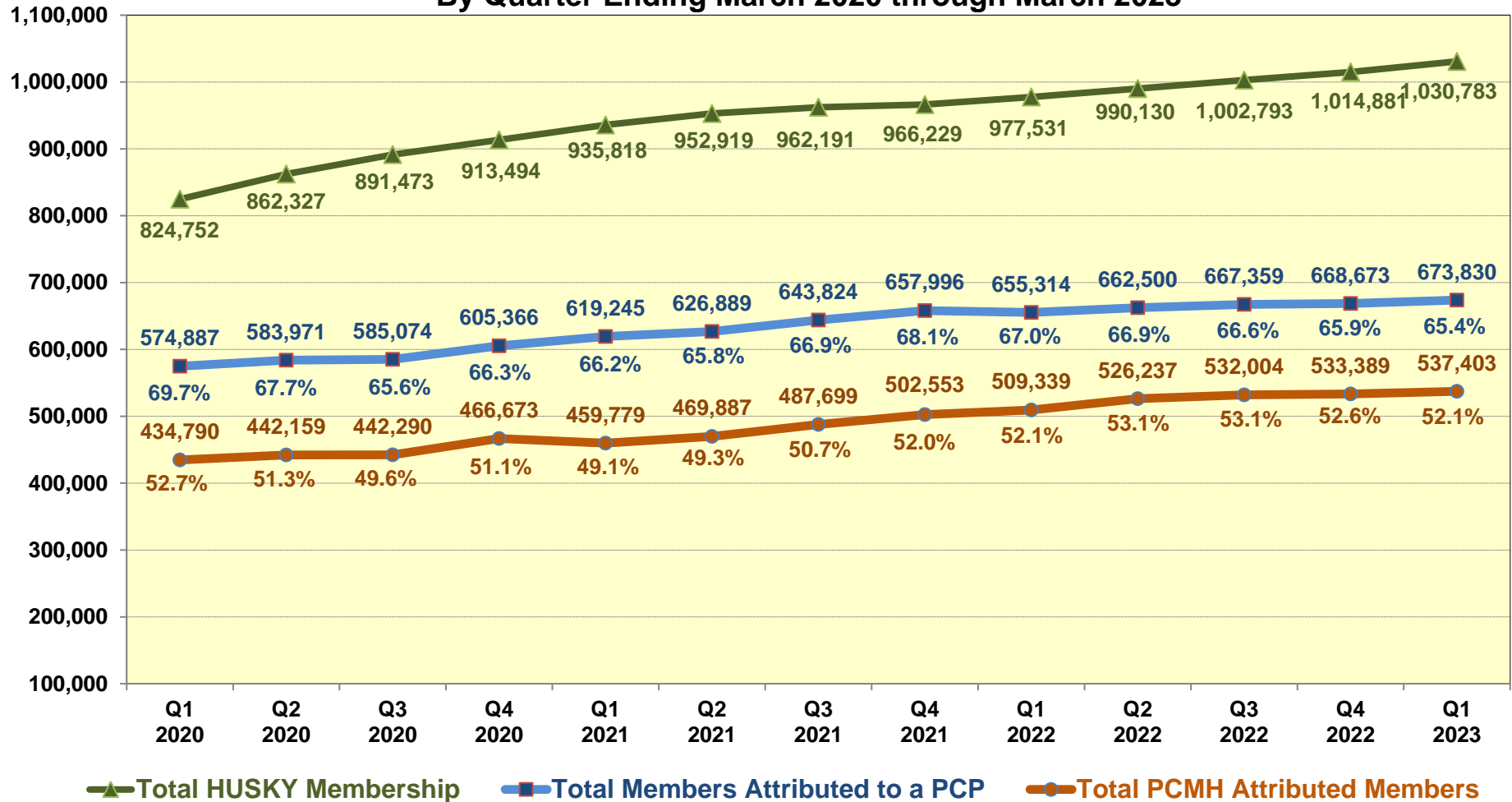
4 Practice Sites

11 Providers

These are eligible primary care practices that are most likely to enroll in the PCMH program in 2023.

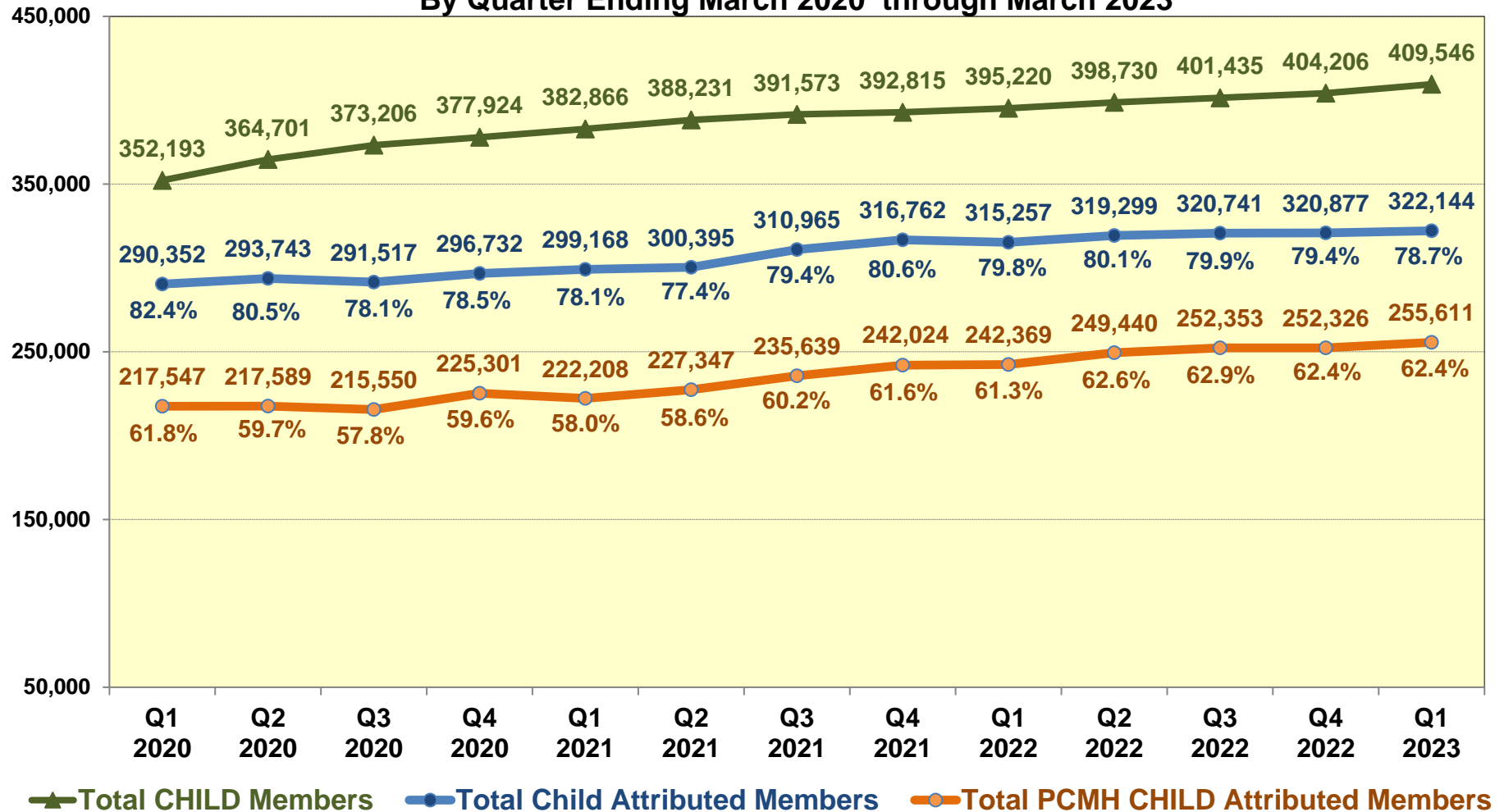
PCMH Program Member Attribution

Summary of Total HUSKY Membership, Total Members Attributed to a PCP
and Total PCMH Attributed Members
By Quarter Ending March 2020 through March 2023



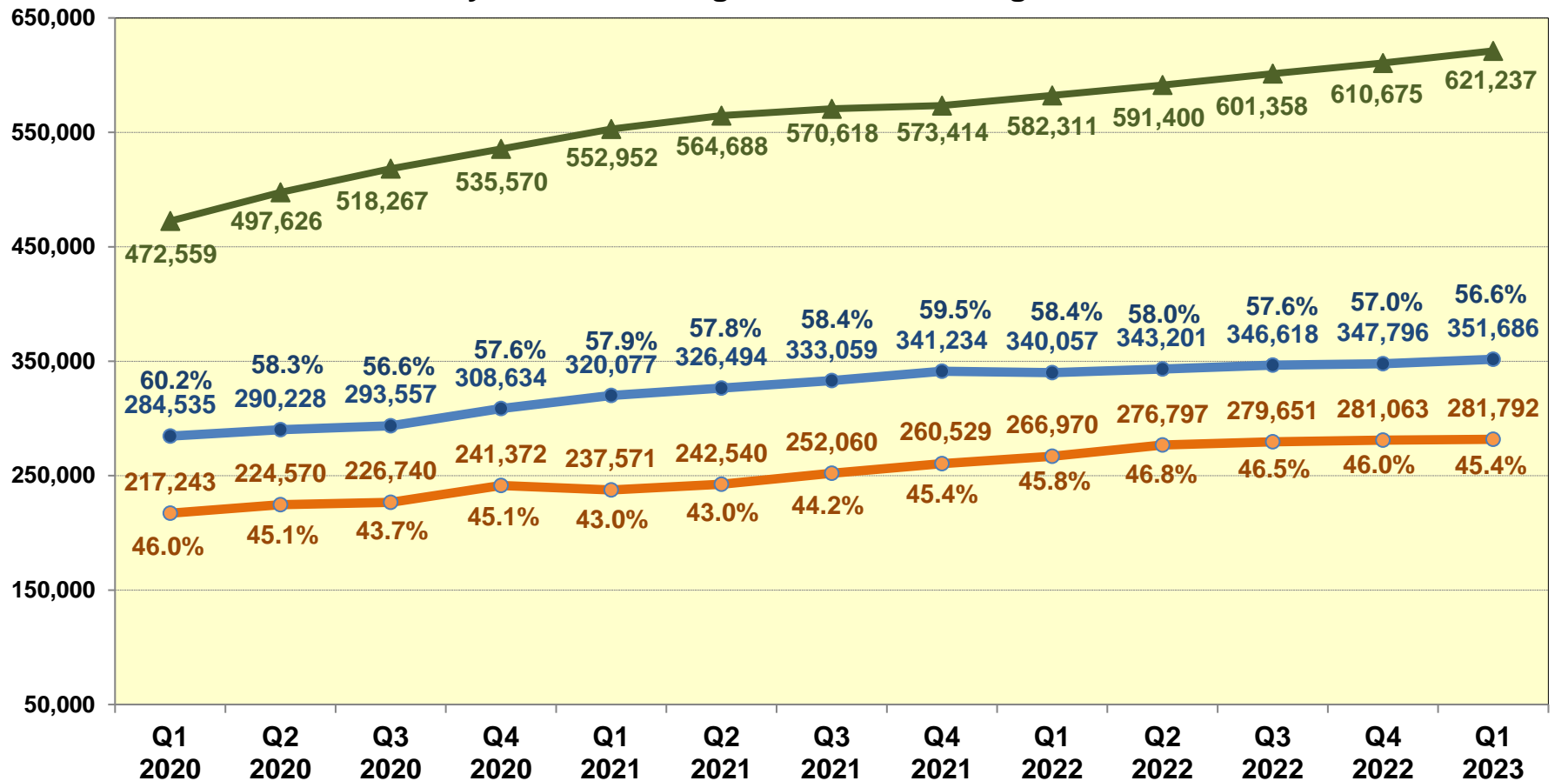
PCMH Program CHILD Member Attribution

Comparison of Total CHILD Members, Total CHILD Attributed Members,
and Total PCMH CHILD Attributed Members
By Quarter Ending March 2020 through March 2023



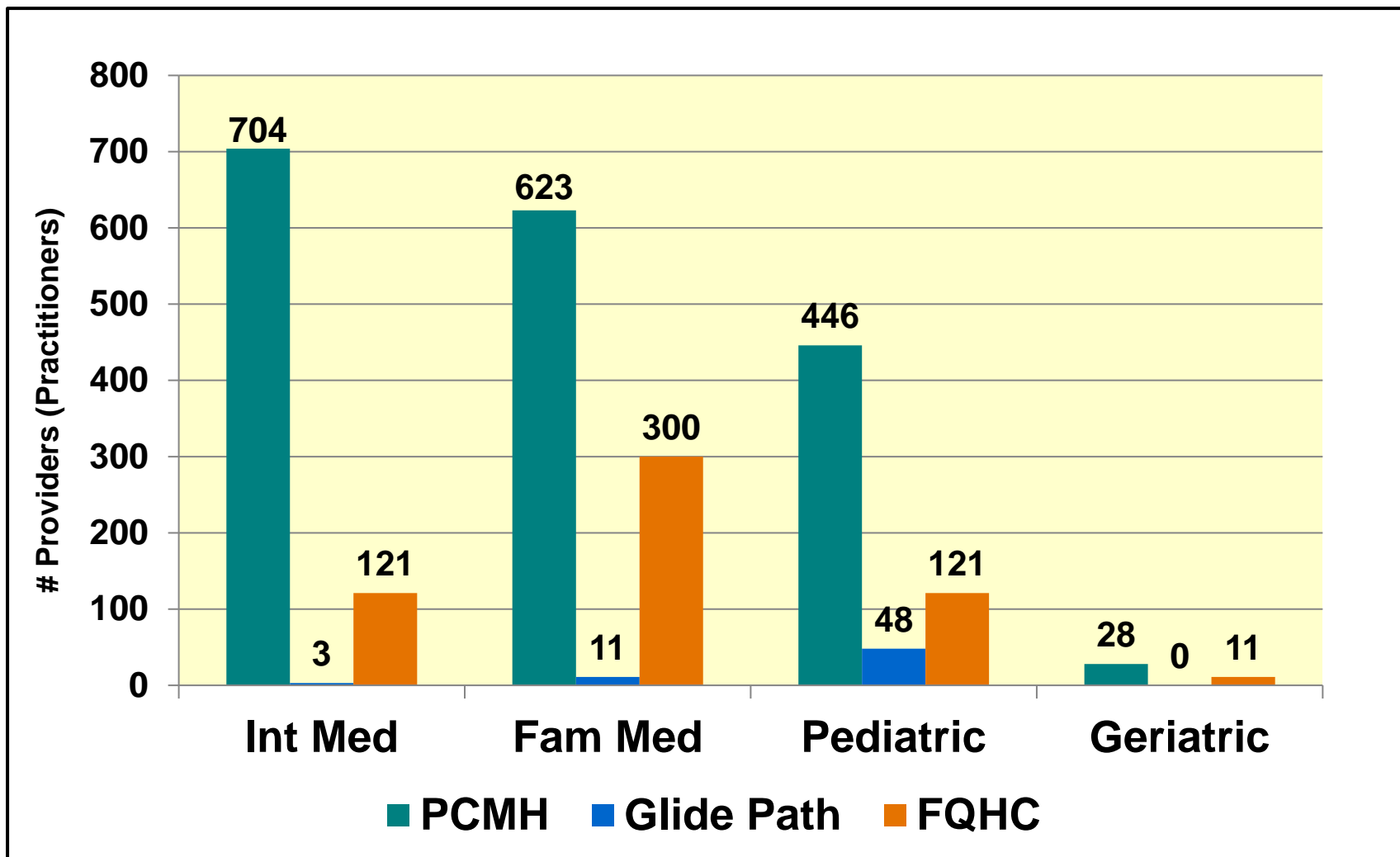
PCMH Program ADULT Member Attribution

Comparison of Total ADULT Members, Total ADULT Attributed Members,
and Total PCMH ADULT Attributed Members
By Quarter Ending March 2020 through March 2023

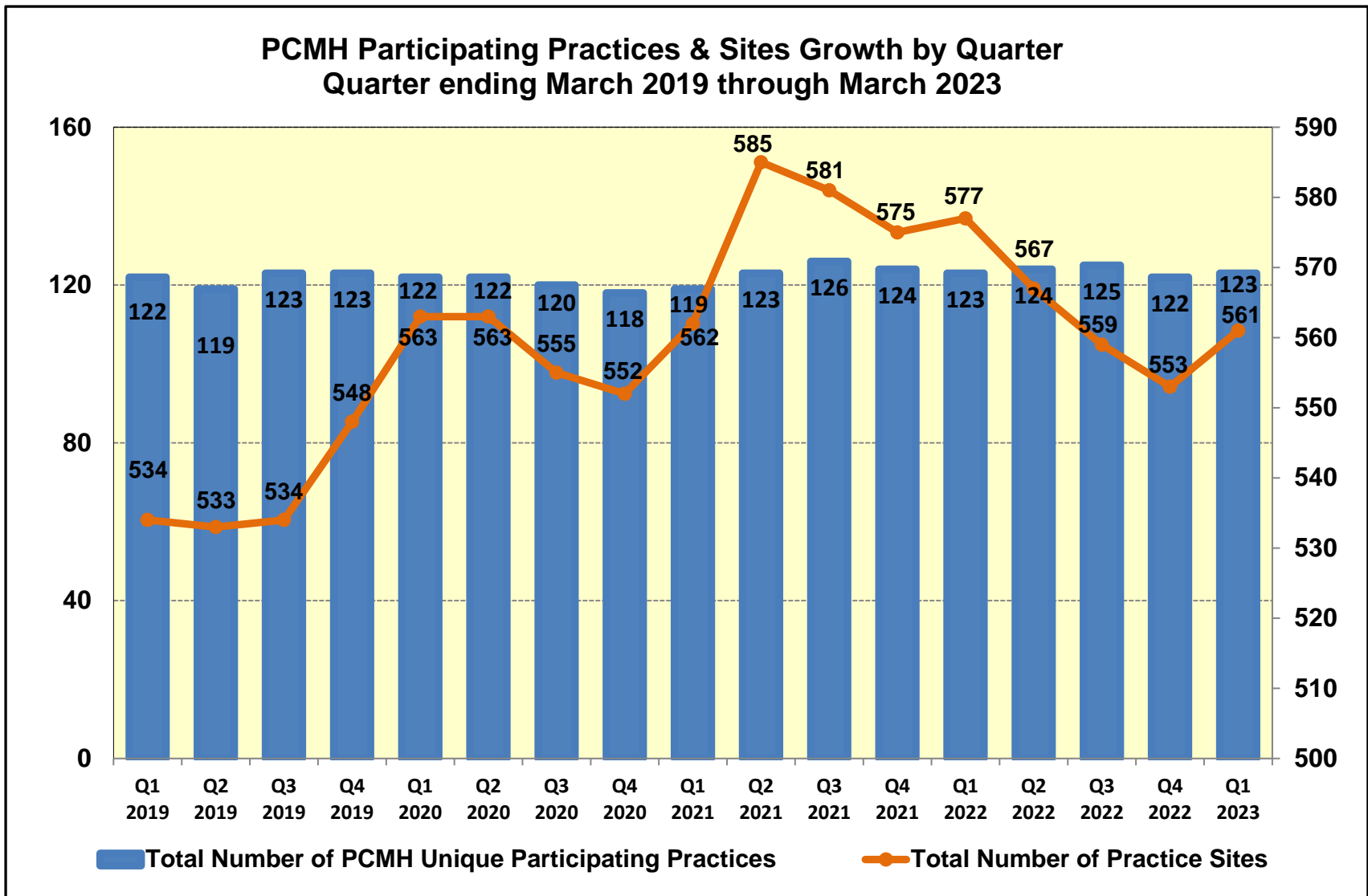


▲ Total ADULT Members ● Total Adult Attributed Members ● Total PCMH ADULT Attributed Members

Provider Specialty by PCMH Program Participation as of May 31, 2023

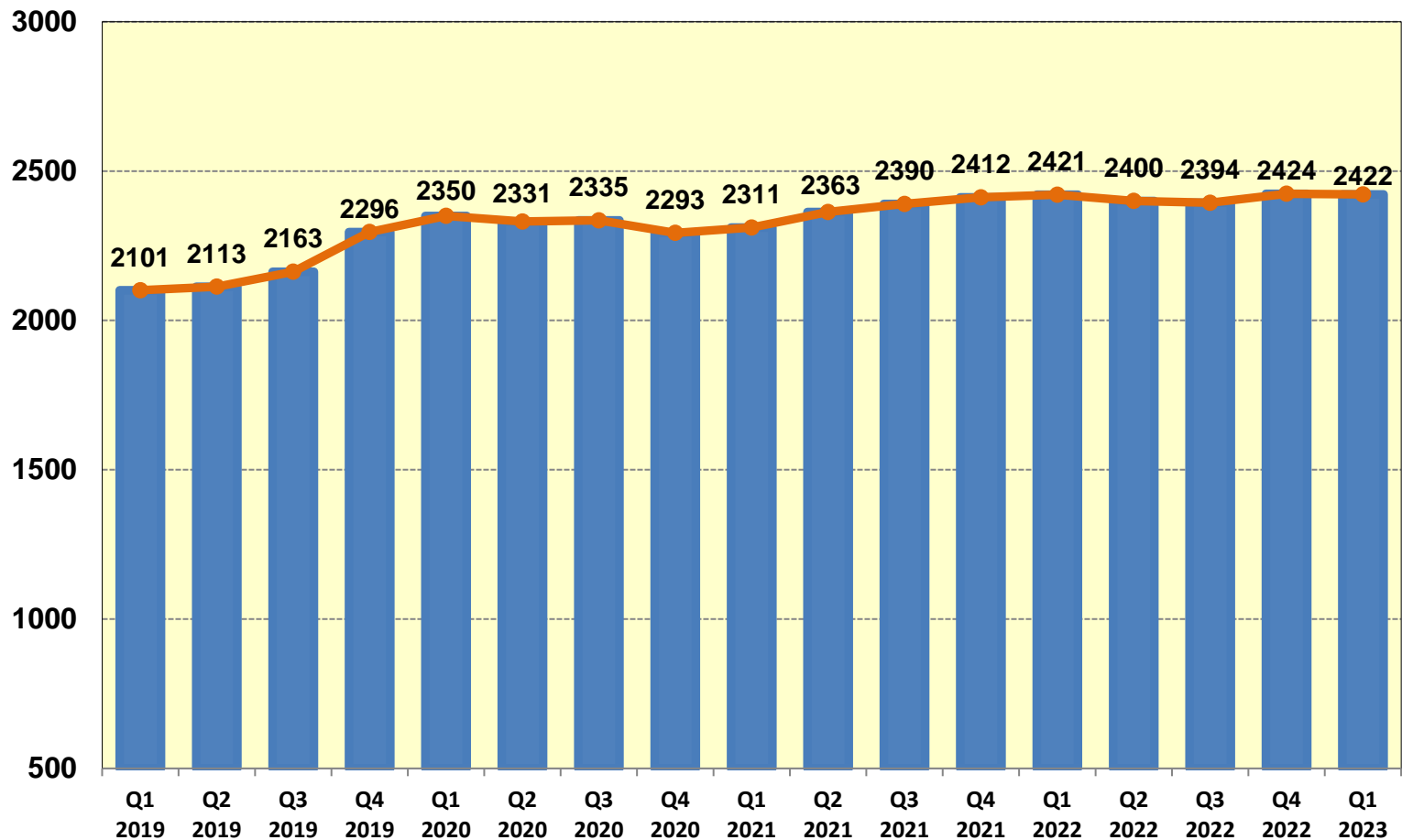


PCMH Program Growth-Practices & Sites



PCMH Program Growth - Providers

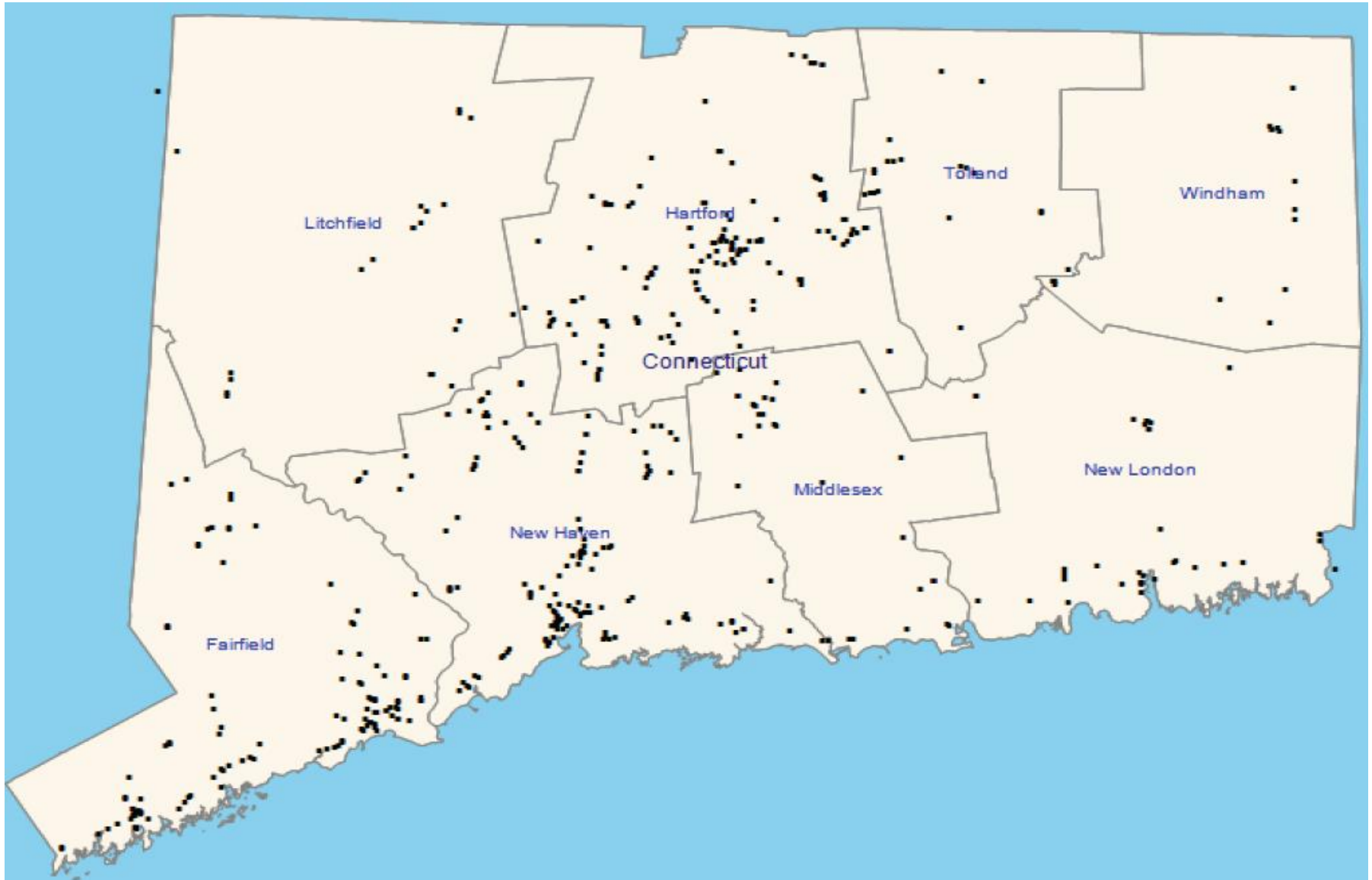
PCMH Total Participating Providers/Practitioners by Quarter
Quarter ending March 2019 through March 2023





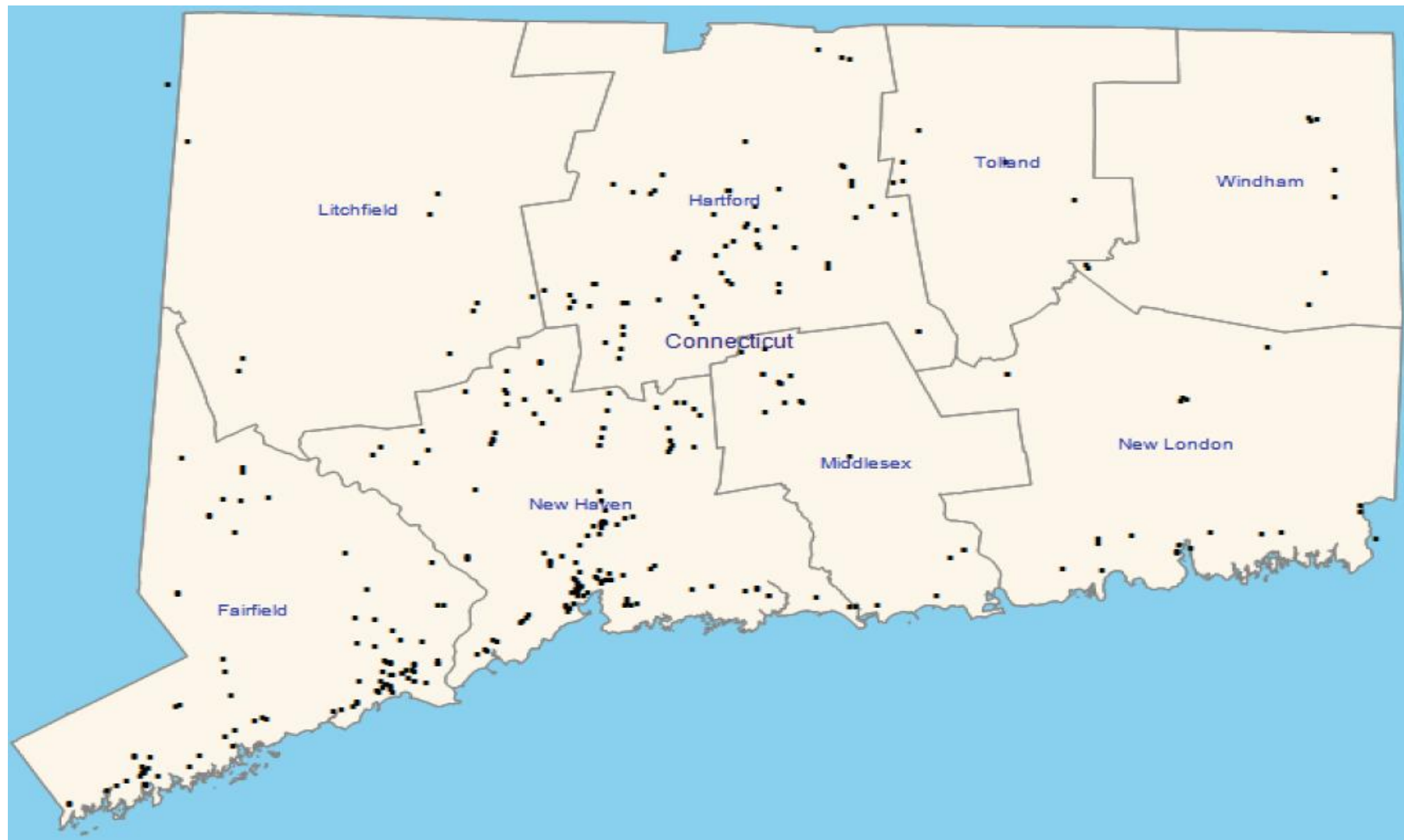
PCMH Practice Site Locations

All PCMH Program Practice Site Locations



Note: Data is as of March 31, 2023 – Maps are updated quarterly.

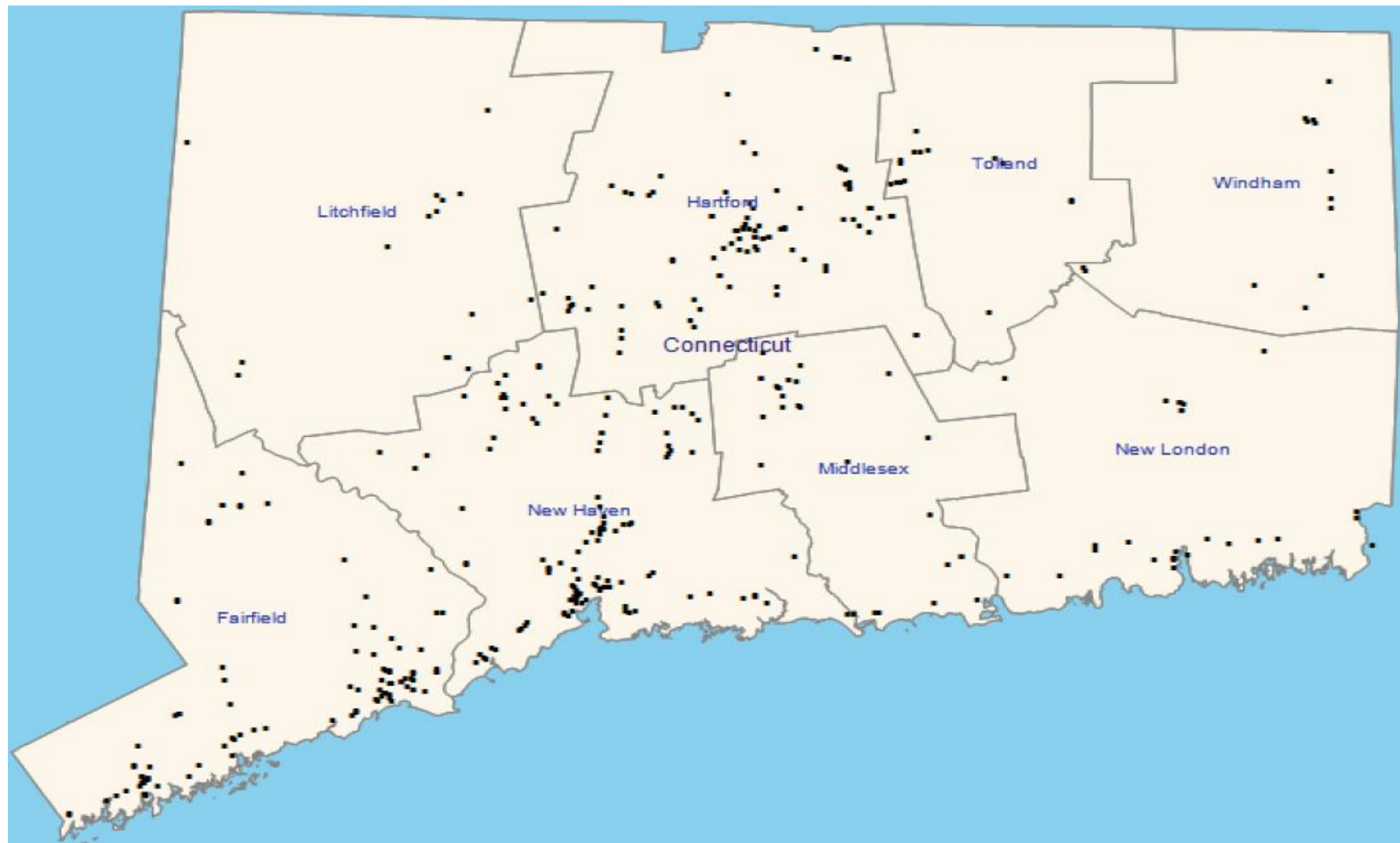
Internal Medicine PCMH Program Practice Site Locations



Note: Data is as of March 31, 2023 – Maps are updated quarterly.

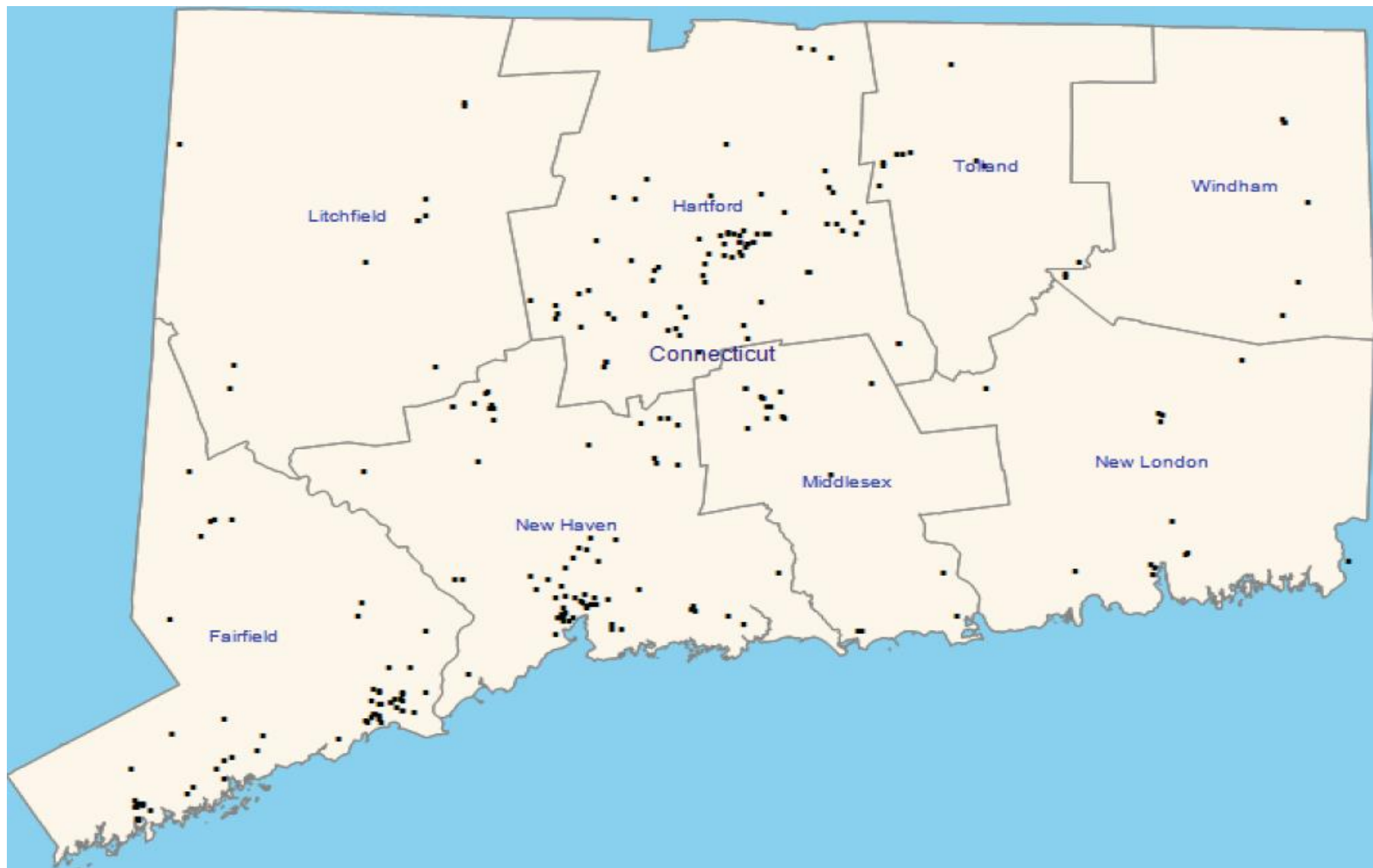
Family Practice PCMH Program

Practice Site Locations



Note: Data is as of March 31, 2023 – Maps are updated quarterly.

Pediatric PCMH Program Practice Site Locations



Note: Data is as of March 31, 2023 – Maps are updated quarterly.